



נסע ביתן כפרי

פנג שוואי
מרחבים מכניסי חיים



FLYING STARS FENG SHUI AUDIT CREATES A HOME SANCTUARY

Just as a a greenhouse provides ideal conditions for plants to grow in, so must a home provide the ideal environment for humans. When people talk to me about Feng Shui, they often ask....

*"Don't you have to believe in Feng Shui for it to work?" to which I reply...
"No, you just have to FEEL it!"*

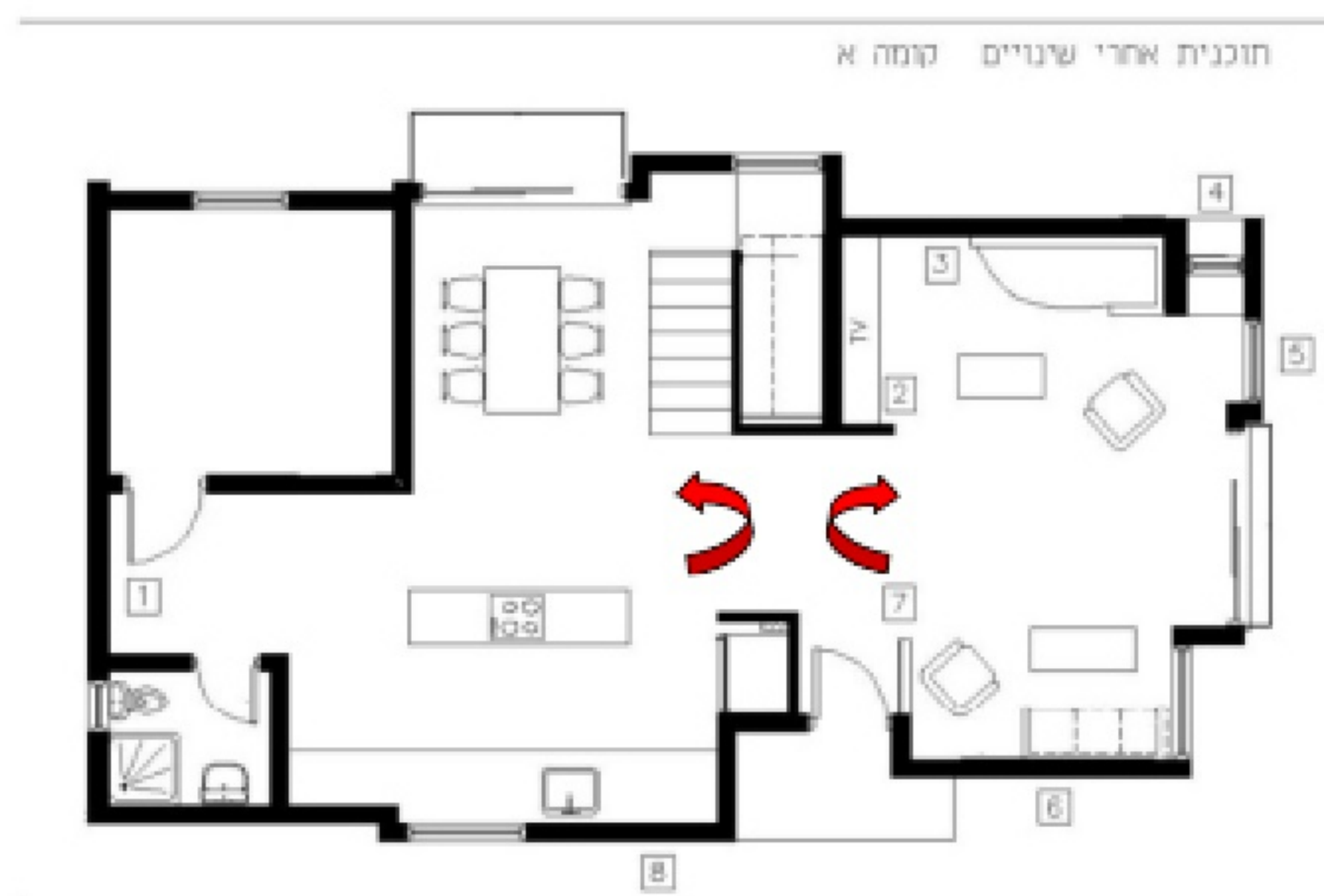
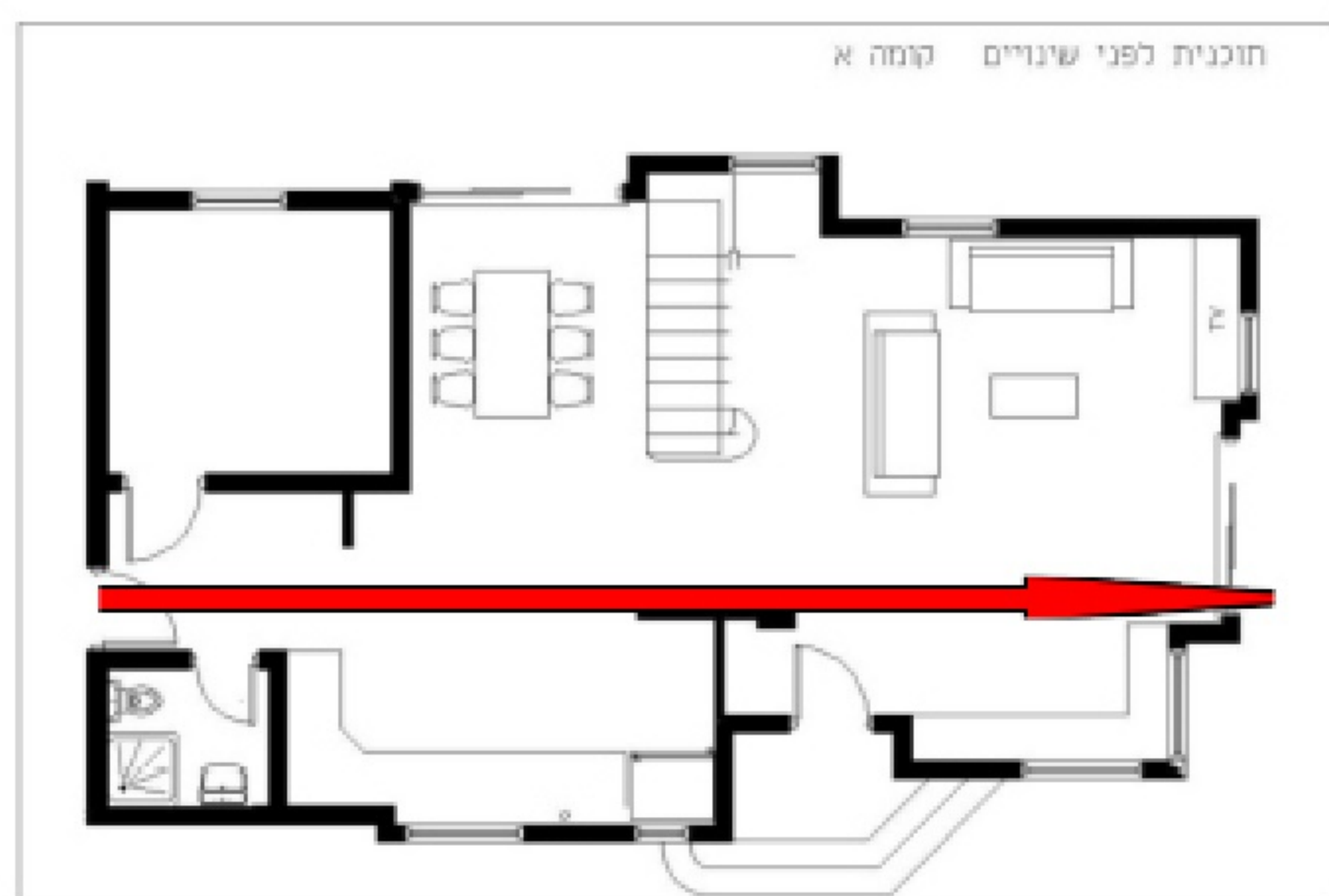


A Client of mine in Israel, is a single mother of three. The father was killed as a victim of war. The home was in disorder and the atmosphere - tense. Every corner looked like a storeroom and the mother's bedroom had become the laundry room. The general feeling was of external and internal confusion, frustration and irritation. The mother admitted, "it's like the house was hit by a tsunami"!

She couldn't find the inner strength to deal with it. She wanted her home to be her fortress, a place that would give her strength and support. Although sociable and creatively expressive, she lived with the feeling of just surviving.

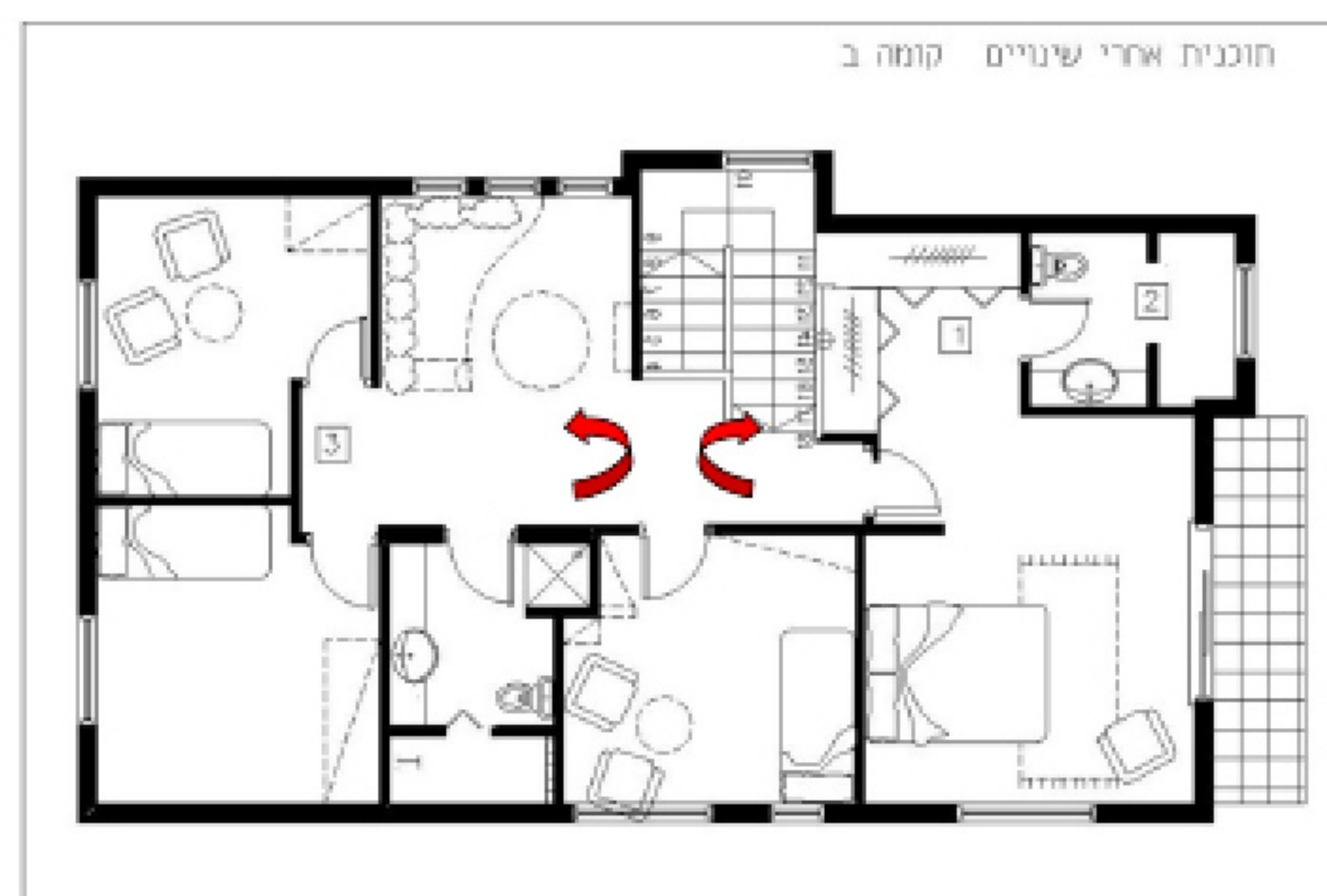
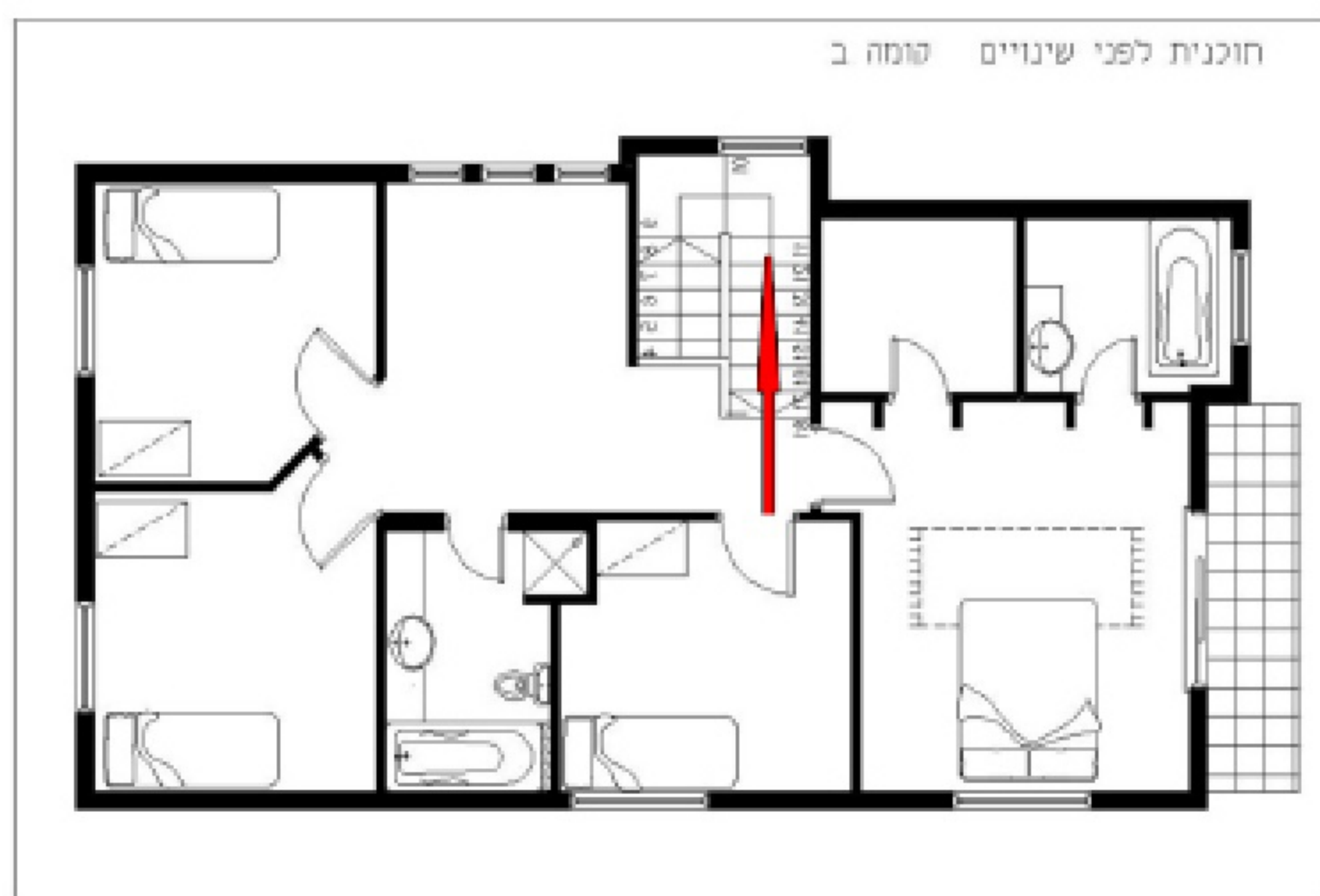
Mapping out the Flying Star formula, I could see how the energies explained the family's feelings. The entrance they used made the home long and narrow, like a river flowing in through the door and out into the back garden. The nature of the present energies reflected the family's belief - "There's nothing to be done, that's life". A rather compromising, passive attitude.

The front door, which was not used, would have made the flow of chi more relaxing, however it was opposite stairs which made it less inviting. The most important chi for this era was blocked by a wall. When chi is blocked from entering, it creates a feeling of suffocation, tension in short, a dead end. I suggested they use the original front door, create a foyer, and close the eastern windows to give a supportive backing to the living room sofa, while alternatively, opening southern windows to allow entry of this era's important chi. The living room now became two seating areas, one for watching TV and one for conversation and reading.



Upstairs, one bedroom opened directly onto the staircase giving a feeling of instability and lack of privacy. The corridor ended in a corner where chi accumulates and gets stuck. Every bed was opposite a door and under a window, which does not foster good sleep. The mother's bedroom opened onto the hallway and opposite her bed were doors into the closet and the bathroom, disallowing relaxation of body or mind.

The position of the bedroom door opposite the staircase was changed, diagonal bedroom lines were straightened and positioning of beds were changed. The mother's bedroom underwent a drastic change with a foyer separating the room from the others. The family corner was turned into a soft place full of cushions and color. These changes allowed a relaxing flow of chi which changed the general atmosphere.



The walls were painted in soft shades of green and sand, ushering in a new beginning, softness and movement with a feeling of earthiness adding stability. For the oldest daughter, soft pink wallpaper with circular lines were chosen. The middle son's room was shades of green to encourage creativity, and for the youngest son, we designed something grounded, stable and embracing.

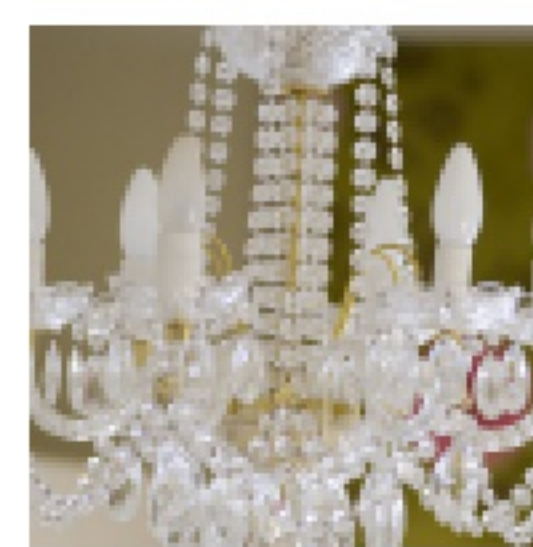
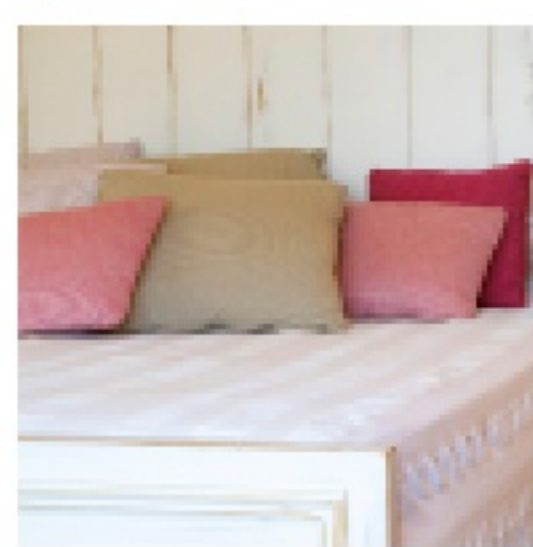
The mother's room was painted a smoky pink and cream, with provincial-style furniture which added warmth. Every time she enters the room she breathes a sigh of satisfaction.

Going back downstairs, at the home's entrance, we used a rough texture which symbolically slows the rush of chi and imparts a nurturing feeling. The living room has splashes of intense green, pink, orange and red; combined they introduce liveliness and joy.



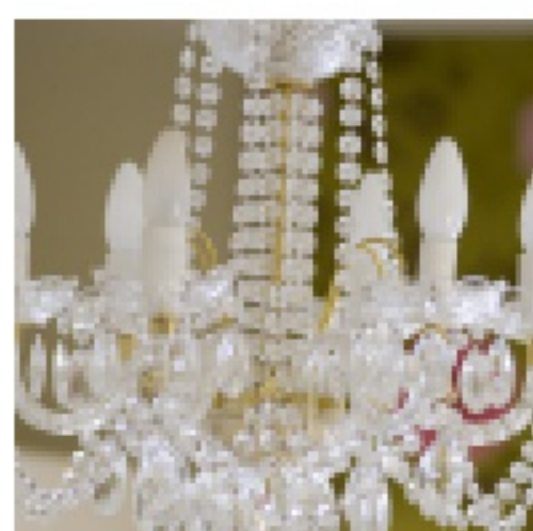
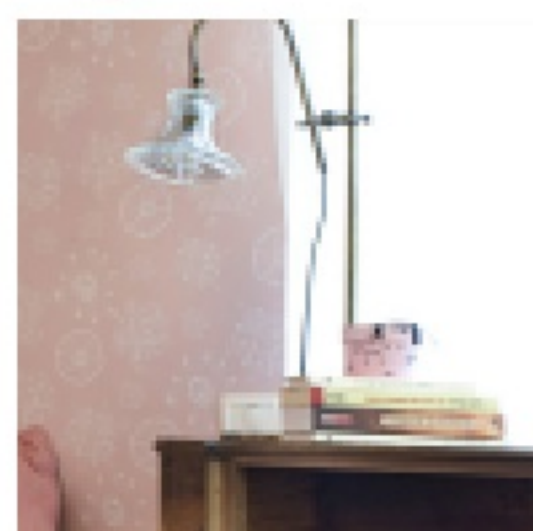
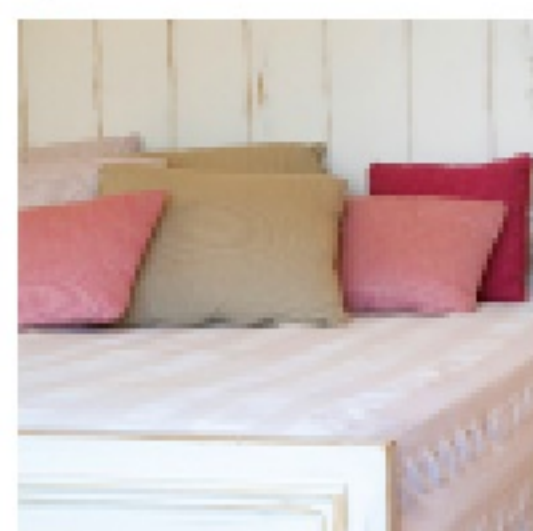


*Tap thumbnails to view images





*Tap thumbnails to view images





Flying Stars Feng Shui Audit

by: **Neta Bitan Kafri**

Website: www.designforpotential.com

Click to view website

Neta Bitan Kafri, is an expert in Feng Shui interior design. Israel
She has authored “Feng Shui-Spaces that Introduces Life (English)
She conveys a unique interpretation of the classic and traditional significance of Feng Shui and translates it well into modern design.

She believes that our living spaces influence our mood, health, and general success.

